

DACH 1st Year Meeting

June 3rd – 4th 2013

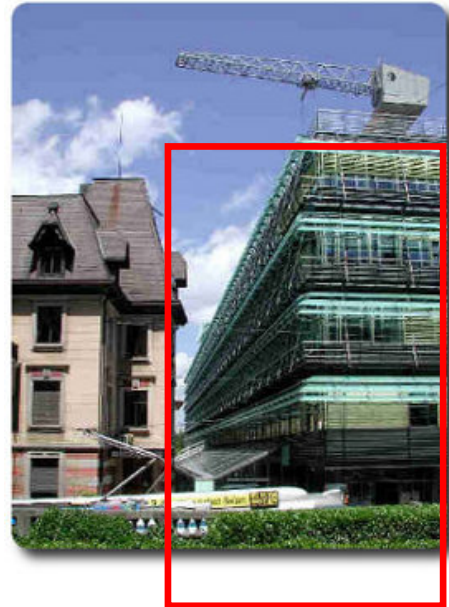
Zurich/Switzerland

Venue:

ETH Zurich
Tannenstrasse 3
CLA Building, Room J1

See also:

http://www.icvr.ethz.ch/about/Contact_EN



How to find ETH

General information

Public transportation is by far the most convenient means to travel in and around Zurich. In most cases they are faster, cheaper and you have less stress!

Arrival at the airport (Zurich Airport ZRH)

After claiming your baggage, follow the signs "Bahn/Railway" to the ticket counters and machines. There are English instructions on the machine; follow them or simply press the left (red) key at the bottom where it says "Zurich City" (make sure that the display shows "2 Std"). The machine prompts for 6.40 CHF and accepts coins as well as 20.- CHF banknotes and gives change. The ticket is valid during the next hour for any train to Zurich as well as for the trams and buses in the city (streetcar, Strassenbahn). Take an escalator down to the platforms 3 or 4. Trains to city centre leave approx. every 10 minutes and take about 10 minutes to reach main station (main station or Zurich HB).

Easier, but a little slower: Follow the signs of no. 10 tram, which will take you directly to the ETH. Exit the tram at the station 'ETH/Universitätsspital'. I recommend using the tram, because it stops almost directly in front of the institute (see picture).

Arrival at the railway main station (Hauptbahnhof)

At the main station walk to the head of the train and follow any signs to "Bahnhofstrasse". Once outside the station, walk about 50 m up the road to the tram stop on the left-hand side. You could also follow the signs of no. 10 tram (direction "Flughafen"). Alternatively, you can also take tram no. 6 (direction "Zoo"). In both cases, you have to exit the tram at the station 'ETH/Universitätsspital' (3rd stop). If you arrived by train and haven't yet got a tram ticket, you

need to buy one from blue ticket machines, press the "Kurzstrecke" button and put in 2.60 CHF.



Agenda

June, 3rd 2013 (Room G2)

08.30 – 09.00	Get together, Welcome
09.00 – 10.00	Presentation of results TUD
10.00 – 10.15	Coffee Break
10.15 – 11.15	Presentation of results JKU
11.15 – 12.15	Presentation of results ETH
12.30 – 13.30	Lunch
14.00 – 14.45	Demo ETH with Kinect and Pixelsense
14.45 – 15.45	Proposal and discussion of setup for user studies
15.45 – 16.00	Coffee Break
16.00 – 17.00	Demo and discussion on software framework
17.00 – 17.30	Wrap-up and topic definition of next day's work tasks
19.00	Dinner in Zurich City

June 4th 2013 (Room G2)

08.30 – 09.00	Recall of yesterday's outcomes
09.00 – 09.15	Coffee Break
09.45 – 11.15	Technical discussions to defined tasks
11.15 – 12.00	Planning of next steps and next meeting

Some hotels close to the venue:

Hôtel du Théâtre
Seilergraben 69, 8001 Zurich
Tel.: +41 44 267 267 0
Fax: +41 44 267 267 1
Mail: info@hotel-du-theatre.ch
www.hotel-du-theatre.ch

Hotel Leoneck
Leonhardstrasse 1, 8001 Zurich
Tel.: +41 44 254 22 22
Fax: +41 44 254 22 00
Mail: info@leoneck.ch
www.leoneck.ch

Hotel Comfort Inn Royal
Leonhardstrasse 6, 8001 Zurich
Tel: +41 44 266 59 59
Fax +41 44 266 59 60
Mail: office@comfortinn.ch
www.comfortinn.ch

Hotel Sunnehus
Sonneggstrasse 17, 8006 Zurich
Tel: +41 44 250 27 27
Fax +41 44 250 27 28
www.hotelsunnehus.ch

Hotel Bristol
Stampfenbachstrasse 34 • 8006 Zürich
Tel: +41 44 258 44 44
Fax +41 44 258 44 00
www.hotelbristol.ch/
